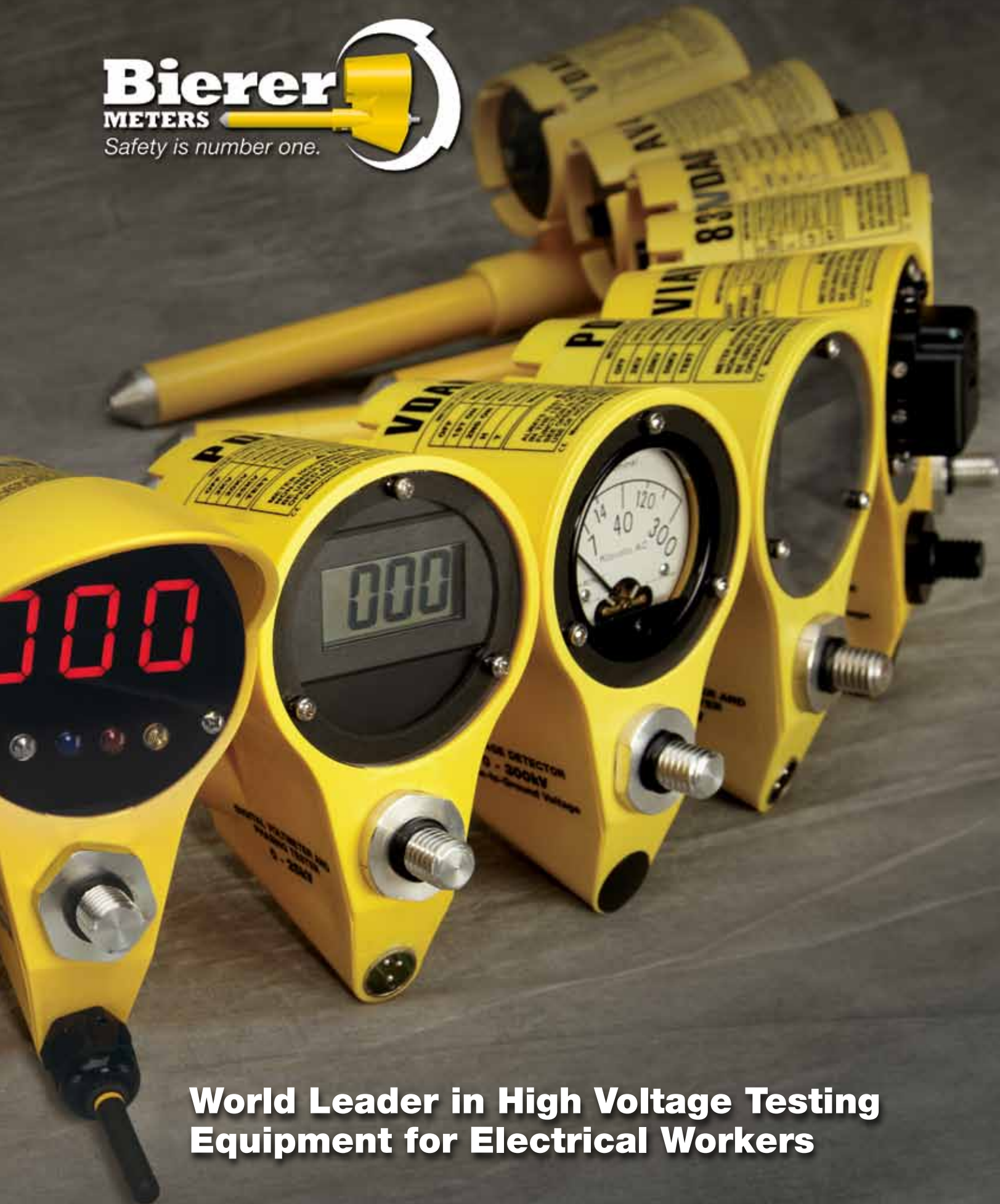


Bierer

METERS

Safety is number one.



**World Leader in High Voltage Testing
Equipment for Electrical Workers**



We service and repair all of our meters as needed to ensure years of safe and accurate reliability ending the throw away scenario.

Patent 621-
K110V20
02



World Leader in High Voltage Testing Equipment for Electrical Workers



Bierer and Associates Inc. is a manufacturer of high voltage metering and test equipment. Founded in 1985 it is a US based company located in Blythewood SC. It has established itself as a world leader in state of the art portable test equipment for electric utilities, contractors and commercial use worldwide. Bierer and Associates Inc. prides itself in establishing personal and professional relationships with our customers. We ensure product performance, support and most importantly-Safety!

Holding twelve US patents and three US patents pending places Bierer first in the industry. Our revolutionary PD Series multifunction AC/DC digital corded phasing voltmeters will operate from 12 volts to 50,000 volts with an accuracy of 1%. This allows the user to replace multiple costly single-use devices to save your company time and money.

The industries first and only Wireless Phasing Meter that will operate from 120 volts to 765,000 volts. One device for all voltage ranges. Transmission, distribution or secondary voltages. Overhead or URD construction. The PD800W will display phase angle difference, phase sequence, phase rotation, leading phase as well as operate as a standalone voltage detector.

Our Phasing Ranger is the industries first and only long

distance phasing tool which has been tested at distances up to 1000 miles; Our VD1000 Voltage Detector is a multi-range detector covering all voltage ranges from proximity detecting of downed power lines to 765,000 volts; Our line of AV(Audio/Visual) voltage indicators, customizable to suit the needs of your utilities voltage ranges, affordable and repairable; The GT400HDXL or GT600VMA high current testers. The only testers that circulate ASTM maximum continuous rated current through personal protective ground or mechanical jumper assemblies; The ST500 and ST800 is a portable hand-held lightweight device that produces 500 Amps or 800 Amps of high magnitude current pulses for cable tracing and/or identification of bad conductor(s), bad connectors on overhead, URD and secondary spans to the meter base.

Phasing Meters, Voltage Detectors, Grounding Testers, Bierer & Associates Inc. has been at the leading edge of technology in our industry, manufacturing in the USA for decades, but more importantly is how our team also leads the industry in your team's Safety!

Check out our full product line at BiererMeters.com or call us at 803-786-4839 and someone will be more than happy to assist you in determining what appropriately fits your specific requirements.



PD25[®] Phasing Digital Meter 25kV

- Completely Shielded Interconnect Cable (Insulated 35kV to Ground), that Does NOT Have to be Held Off of Grounded or Live Objects for Fear of Shock or Interfering with the Reading
- Multiple Ranges 2kV, 20kV, 25kV
- Interconnect Cable Lengths up to 100ft. Insulated to 35kV
- Patented Input Circuitry
- The Most Accurate High Voltage Meter Available, with Accuracy to +/- 1% true RMS voltage
- Both Probes are Impact and Water Resistant Designed to Withstand Wear
- Both Probes are Stored in Either a Highly Durable Padded Carrying Case or a Canvas Bag
- Extension Resistors Available for Voltages up to 75kV
- One Year Warranty on Parts and Labor

The PD25 is a 0-25kV all-in-one phasing voltmeter with numerous applications.

- Capacitive Test Point Phasing Meter
- Regulator Neutral Detector
- Measure True RMS Voltages
- Commercial/Industrial Meter
- Phasing or Measuring Secondary Voltages, Replacing 600V Voltmeters
- Conventional Phasing Voltmeter for Overhead and URD Systems from 0-25kV Phase to Phase
- DC and Multiple Frequency AC up to 400Hz
- High Line Resistive Voltmeter*
- Phase Sequence/Rotation Meter*
- DC Leakage Tester* (lightning arrester tester)
- Hi Pot URD Cable*
- DC Cable Tracer*

*Optional Adapter Required

ALL PURPOSE

The PD Series[®] Utility Meters

The **Safest** most **Versatile**
Meters Available Today!

The PD Series[®] All-Purpose Utility Meters are phasing voltmeters designed to replace numerous other meters that feature a single range and/or perform a single function. Also available in PD10 and PD35 versions.



Patented Technology



PD25 Switch Positions





PD50[®] Phasing Digital Meter 50kV

- Completely Shielded Interconnect Cable (Insulated 35kV to Ground), that Does NOT Have to be Held Off of Grounded or Live Objects for Fear of Shock or Interfering with the Reading
- Multiple Ranges 2kV, 20kV, 50kV
- Interconnect Cable Lengths up to 100ft. Insulated to 35kV
- Patented Input Circuitry
- The Most Accurate High Voltage Meter Available, with Accuracy to +/- 1% true RMS voltage
- Both Probes are Impact and Water Resistant Designed to Withstand Wear
- Both Probes are Stored in Either a Highly Durable Padded Carrying Case or a Canvas Bag
- Extension Resistors Available for Voltages up to 100kV
- One Year Warranty on Parts and Labor

The PD50 is a 0-50kV all-in-one phasing voltmeter with numerous applications.

- Capacitive Test Point Phasing Meter
- Regulator Neutral Detector
- Measure True RMS Voltages
- Commercial/Industrial Meter
- Phasing or Measuring Secondary Voltages, Replacing 600V Voltmeters
- Conventional Phasing Voltmeter for Overhead and URD Systems from 0-50kV Phase to Phase
- DC and Multiple Frequency AC up to 400Hz
- High Line Resistive Voltmeter*
- Phase Sequence/Rotation Meter*
- DC Leakage Tester* (lightning arrester tester)
- Hi Pot URD Cable*
- DC Cable Tracer*

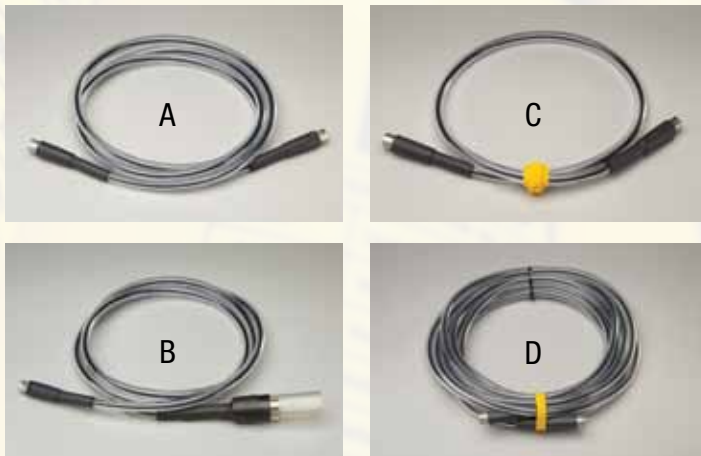
*Optional Adapter Required



Patented Technology



PD50 Switch Positions



Cable Accessories

- A = Standard 8 Foot Cable
- B = Standard 8 Foot Extension
- C = Standard 3 Foot Cable
- D = Standard 30 Foot Cable

3KV Power Supply

The 3kV Power Supply is used to determine if a Voltage Indicator, Voltage Detector or Phasing Meter operates properly in the presence or in direct contact with an energized voltage source. For safety purposes and part of ASTM: F1796 Testing Capacitive Type High Voltage Detectors, Bierer always recommends the operator check for proper operation of their detection device before and after each use.



PD800W® Phasing/Voltage Digital Wireless Meter

The PD800W® Cordless Phasing Meter accurately and easily operates in multiple applications including **phasing, voltage detection, phase sequencing and phase angle indication**. You will only need this one kit for three-phase secondary systems, capacitive test points, URD systems and overhead and transmission/substation systems. This unique tester operates like a conventional phasing tester, but **does not require an interconnecting cable or extension resistors**.

- FCC Licensed Wireless Technology
- Meter Probe features a Large Easy-to-Read Digital Display with Backlight
- Both Probes feature High Intensity Color Coded LED Indicator Lights
- Both Probes are Impact and Water Resistant, Designed to withstand Wear
- Both Probes are Completely Shielded to Minimize Stray Field Interference
- Cordless Phasing Tool Direct Contact from 120V - 69kV
- Cordless Phasing Tool (Degree Position Only) Non-Contact from 69kV - 800kV, Transmission/Substation Systems
- Automatically Alerts User of a Delta/Wye Transformation
- Operating Range of 100ft.
- Kit is Stored in a Highly Durable Carrying Case Padded with Foam
- One Year Warranty on Parts and Labor
- URD and OH Voltage Detector to 51kV



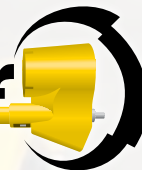
Patented Technology



Dual Phase Power Supply

Bierer introduces our Dual-Phase Power Supply for performing an out-of-phase and in-phase voltage and phase angle test for corded and wireless phasing meters. With an available 3kV output and a true dual phase-angle relationship, an out-of-phase test is easily distinguishable. For safety purposes, and as part of ASTM Safety Standards, Bierer always recommends the operator check for proper operation of their phasing device before and after each use.





Phasing Ranger 1™ GPS Phasing Tool

The **Phasing Ranger 1** is a revolutionary Phase Identification device. No other phase identification device is easier to use when it comes to determining actual phase relationship in the field. All readings are **Real Time** readings, there are no calculations to be made or data to be transferred from one location to another.

This **Smart Grid** Technology requires a **One Time** set-up procedure and then allows the user a permanent and reliable means of phasing, phase ID, mapping and tagging or general troubleshooting.

- Absolute Phase Identification
- Mapping & Tagging
- Identifies All General Phasing Applications
- Phase Sequence CW/CCW
- URD and Overhead
- Flags Delta/Wye, Wye/Delta Transformations
- Simultaneous use of Multiple Field Units
- Usable from 120V to 765kV
- One Year Warranty on Parts and Labor

Patented Technology



Field Unit



Base Unit

The Phasing Ranger 1™ is compatible with many of our metering products like the PD800W Phasing Set greatly enhances “Smart Grid Technology” and positively identifies the phase angle of each particular line.



HP72™ Hi-Pot Meter

Bierer's Hi-Pot Meter is designed to perform a preliminary milliamp leakage test on URD cable. The meter operates on two distribution voltage ranges: 7.6kV & 2.7kV phase to ground.

There are two selector toggle switches on meter, one on the back and one on the side of the meter housing. The toggle on the back allows the user to select between 7.6kV or 2.7kV. The selector switch located on the side allows the user to test the meter before and after operation and also turn on an LED back light for low light work conditions.

- Small and Lightweight
- Clear Analog Indication of "Good" or "Bad" Cable
- Much Safer Because Operator No Longer Has to Daisy Chain Primary
- One Year Warranty on Parts and Labor



HP72DC™ Hi-Pot Meter

The HI POT DEVICE is designed to HI POT de-energized 15kV class cables. The tool transforms 18 volts from the Milwaukee battery to approximately 8,000 volts DC. When the battery is installed and the safety switch is in the closed down position, the unit is in voltage detection mode. Unit should be in this position when installing the device as it will sound a warning alarm if you approach an energized source. When the safety switch is lifted and the toggle switch is switched up, the unit is in the Hi-Pot mode and the high voltage DC is being applied.

- Small and Lightweight
- Clear Analog Indication of "Good" or "Bad" Cable
- Much Safer Because Operator No Longer Has to Daisy Chain Primary
- No Primary Voltage Required
- One Year Warranty on Parts and Labor





81280 Analog Phasing/Voltage Meter 25kV

The **81280** is a unique tool in that it may be used as a conventional phasing meter, or the meter probe may be used as a stand-alone voltage detector on primary or secondary voltages or capacitive test points.

- Can be used as a Stand-Alone 25kV Voltage Detector without the Second Probe
- A Conventional 25kV Phasing Meter both Overhead and URD Applications
- Phase Capacitive Test Points
- A Large Easy to Read Analog Meter
- Meter Housing is Completely Shielded to Minimize Stray Field Indications
- An Insulated (35kV) Interconnect Cable with Second Probe
- Each Probe is Impact and Water Resistant
- Meter is Stored in a Highly Durable Padded Carrying Case
- One Year Warranty on Parts and Labor
- HiPot Capable with HiPot Adapter
- De-Energized Capacitors



83280 Analog Phasing/Voltage Meter 35kV

The **83280** is a unique tool in that it may be used as a conventional phasing meter, or the meter probe may be used as a stand-alone voltage detector on primary or secondary voltages or capacitive test points.

- Can be used as a Stand-Alone 35kV Voltage Detector without the Second Probe
- A Conventional 35kV Phasing Meter both Overhead and URD Applications
- Phase Capacitive Test Points
- A Large Easy to Read Analog Meter
- Meter Housing is Completely Shielded to Minimize Stray Field Indications
- An Insulated (35kV) Interconnect Cable with Second Probe
- Each Probe is Impact and Water Resistant
- Meter is Stored in a Highly Durable Padded Carrying Case
- One Year Warranty on Parts and Labor
- HiPot Capable with HiPot Adapter
- De-Energized Capacitors



3kV Power Supply

The 3kV Power Supply is used to determine if a Voltage Indicator, Voltage Detector or Phasing Meter operates properly in the presence or in direct contact with an energized voltage source. For safety purposes and part of ASTM: F1796 Testing Capacitive Type High Voltage Detectors, Bierer always recommends the operator check for proper operation of their detection device before and after each use.



VD1000™ Voltage Detector 1000kV

The **VD1000** Digital Voltage Detector is designed for easily indicating AC voltage on Underground primary, Over head primary and Transmission conductors up to 999 kV. The large digital display can be seen and read at distances up to 50'. Unit is perfect for large system voltages from 4kV to 765kV Phase to Phase.

- Large LED Display with Sunshield
- Bright LED Segment and Battery Test
- Standard 9 Volt Battery
- Water Resistant and Strong Construction Designed to Withstand Wear
- 0-99.9 kV URD, 0-99.9 kV OH, 0-999kV OHT.
- Rated for Indoor and Outdoor Use
- Most Versatile and Accurate Unit in the Utility Industry
- Shotgun & Hot Stick Compatible (Universal Grip All Accessory)
- Contained in a Highly Durable Padded Carrying Case
- One Year Warranty on Parts and Labor



VD1000T™ Voltage Detector 1000kV

The **VD1000T** Digital Voltage Detector has the same great features as the VD1000, but has a Capacitive Test Point, CTP position added to test URD CTP Equipped Elbows.

- Large LED Display with Sunshield
- Bright LED Segment and Battery Test
- Standard 9 Volt Battery
- Water Resistant and Strong Construction Designed to Withstand Wear
- 0-99.9 kV URD, 0-99.9 kV OH, 0-999kV OHT.
- Rated for Indoor and Outdoor Use
- Most Versatile and Accurate Unit in the Utility Industry
- Shotgun & Hot Stick Compatible (Universal Grip All Accessory)
- Contained in a Highly Durable Padded Carrying Case
- One Year Warranty on Parts and Labor

VD1000P™ Voltage Detector 1000kV

The **VD1000P** Digital Voltage Detector has the same great features as the VD1000, but has a P position added to test for Relative Proximity Voltage Detection. Closer to the Voltage Source and Higher the Voltage yields a higher reading.

- Large LED Display with Sunshield
- Bright LED Segment and Battery Test
- Standard 9 Volt Battery
- Water Resistant and Strong Construction Designed to Withstand Wear
- 0-99.9 kV URD, 0-99.9 kV OH, 0-999kV OHT.
- Rated for Indoor and Outdoor Use
- Most Versatile and Accurate Unit in the Utility Industry
- Shotgun & Hot Stick Compatible (Universal Grip All Accessory)
- Contained in a Highly Durable Padded Carrying Case
- One Year Warranty on Parts and Labor





VDA040P™ Analog Voltage Detector 40kV

The **VDA040P** is a Dual Application Analog Voltage Detector.

- Detects 0-40kV Line to Ground (0-69kV Phase to Phase)
- A Proximity or Direct Contact on Overhead and Underground Systems
- Easy to Read Analog Scale
- Detect Voltage from the Ground on Bare Overhead Lines when Hand Held
- Test Secondary Voltage on Bare or Insulated Cables
- The Detector Indicates Line to Ground Values for Nominal or Induced Voltages
- The 5 - Position Selector Switch is Calibrated for Height above Ground to Compensate for a Capacitive Coupling Effect
- Shielded to Minimize Stray Field Interference
- For Your Safety, the Detector Includes Overload Protection up to 500kV
- Internal Backlight available for Night Use, VDAL40P Model
- Water Resistant, and a Strong Construction Designed to Withstand Wear
- Contained in a Highly Durable Padded Carrying Case
- One Year Warranty on Parts and Labor

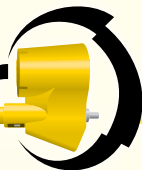


VDA040C™ Analog Voltage Detector 40kV

The **VDA040C** is a Dual Application Analog Voltage Detector.

- Detects 0-40kV Line to Ground (0-69kV Phase to Phase)
- Easy to Read Analog Scale
- Test Secondary Voltage on Bare or Insulated Cables
- Test Capacitive Test Points
- The Detector Indicates Line to Ground Values for Nominal or Induced Voltages
- The 5 - Position Selector Switch is Calibrated for Height above Ground to Compensate for a Capacitive Coupling Effect
- Shielded to Minimize Stray Field Interference
- For Your Safety, the Detector Includes Overload Protection up to 500kV
- Internal Backlight available for Night Use, VDAL40C Model
- Water Resistant, and a Strong Construction Designed to Withstand Wear
- Contained in a Highly Durable Padded Carrying Case
- One Year Warranty on Parts and Labor





VDA0300™ Analog Voltage Detector 300kV

The **VDA0300** is a Wide Range Transmission and Distribution Voltage Detector.

- Widest and Highest Voltage Range Available in a Single Voltage Detector
- 2.4kV - 300kV Line to Ground (4kV - 500kV Phase to Phase) Voltage Range
- For Overhead and URD Applications
- Meter is Passive, Battery is Only Required for the Test Position
- A Linear/Logarithmic scale for Better Resolution from Distribution to Transmission Systems
- Meter is designed to Read Approximate Nominal or Induced Voltage Line to Ground
- Easy-to-Use Detector Requires no Voltage Scale Selectors or Multipliers
- Meter is Water Resistant and a Strong Construction to withstand Wear
- Meter is contained in a Durable Padded Case
- One Year Warranty on Parts and Labor



Patented Technology



Patented Technology

VDA0450™ Analog Voltage Detector 450kV

The **VDA0450** is a Wide Range Transmission and Distribution Voltage Detector.

- Widest and Highest Voltage Range Available in a Single Voltage Detector
- 2.4kV - 450kV Line to Ground (4kV - 765kV Phase to Phase) Voltage Range
- For Overhead and URD Applications
- Meter is Passive, Battery is Only Required for the Test Position
- A Linear/Logarithmic scale for Better Resolution from Distribution to Transmission Systems
- Meter is designed to Read Approximate Nominal or Induced Voltage Line to Ground
- Easy-to-Use Detector Requires no Voltage Scale Selectors or Multipliers
- Meter is Water Resistant and a Strong Construction to withstand Wear
- Meter is contained in a Durable Padded Case
- One Year Warranty on Parts and Labor

WIDE RANGE

Transmission and Distribution

For Overhead and URD Applications

Models with the "H" Suffix Come with the Hold and Backlight Features



VDAH300™ Analog Voltage Detector 300kV

The **VDAH300** is a Wide Range Transmission and Distribution Voltage Detector that comes standard with a Hold feature and Backlight.

- Widest and Highest Voltage Range Available in a Single Voltage Detector
- 2.4kV - 300kV Line to Ground (4kV - 500kV Phase to Phase) Voltage Range
- For Overhead and URD Applications
- Meter is Passive, Battery is Only Required for the Test Position
- A Linear/Logarithmic scale for Better Resolution from Distribution to Transmission Systems
- Meter is designed to Read Approximate Nominal or Induced Voltage Line to Ground
- Easy-to-Use Detector Requires no Voltage Scale Selectors or Multipliers
- Meter is Water Resistant and a Strong Construction to withstand Wear
- Meter is contained in a Durable Padded Case
- Model with the "H" suffix comes with the Hold and Backlight Feature
- One Year Warranty on Parts and Labor



Patented Technology



Patented Technology

VDAH450™ Analog Voltage Detector 450kV

The **VDAH450** is a Wide Range Transmission and Distribution Voltage Detector that comes standard with a Hold feature and Backlight.

- Widest and Highest Voltage Range Available in a Single Voltage Detector
- 2.4kV - 450kV Line to Ground (4kV - 765kV Phase to Phase) Voltage Range
- For Overhead and URD Applications
- Meter is Passive, Battery is Only Required for the Test Position
- A Linear/Logarithmic Scale for Better Resolution from Distribution to Transmission Systems
- Meter is designed to Read Approximate Nominal or Induced Voltage Line to Ground
- Easy-to-Use Detector Requires no Voltage Scale Selectors or Multipliers
- Meter is Water Resistant and a Strong Construction to withstand Wear
- Meter is contained in a Durable Padded Case
- Model with the "H" suffix comes with the Hold and Backlight Feature
- One Year Warranty on Parts and Labor



AV Meter™ Audible/Visual Voltage Indicator

The **AV Meter** is a Voltage Indicator with an Audible and Visual Alarm to indicate the presence of voltage, with an operating range from capacitive test points/secondary voltage to 289kV Line to Ground (500kV Phase to Phase). Activation thresholds meets ASTM Requirements.

- Extremely Economical and a Great Addition to any PPE Program
- Up to 12 available voltage settings that are completely customizable by the customer
- Meter Assembly is Over Voltage Protected
- Incidental Direct Contact Will Not Damage the Unit
- Water Resistant
- Super Bright LEDs and Ultra Loud Horn Guarantees Operator Seeing & Hearing Unit
- Built in Test Position is Standard for All Units
- May also be Used as a Direct Contact Voltage Detector
- Standard Universal/Grip All Adapter is Included with Every Unit
- Packaged in a Durable Bag
- One Year Warranty on Parts and Labor



VBI-15™ Voltage Break Indicator 15kV

The **VBI-15** is a Direct Contact Voltage Break Indicator with an audible and visual alarm to indicate the absence of voltage, with an operating range from 7.2kV to 20kV (Line to Ground). The unit consists of an array of lights and an audible alarm to give the user a quick and clear indication that the overhead line has dropped below the threshold value of 2.5kV. The VBI-15 can be used by all forms of electrical entities; Investor owned utilities, municipalities, cooperatives, contractors, etc. to track outages by individual crews at their location on the system.

- VBI-15 Voltage Break Indicator is Activated when Voltage Levels Drop Below 2.5kV Line to Ground (4kV Phase to Phase)
- The VBI-15 is Used as a Silent Sentinel, the 112dB Horn and Array of Super Bright LED's are Activated when the Line becomes De-Energized.
- The Absence of Voltage Detector is Designed to be Used on Single Phase Nominal 7.2kV – 20kV Systems Line to Ground.
- Overload Protected to 115kV for Your Safety
- SAIDI and CAIDI Ratings Improve by Quicker Outage Response Time
- Water Resistant for Inclement Weather Use
- Strong Construction Designed to Withstand Wear
- Packaged in a Durable Bag
- One Year Warranty on Parts and Labor

Customized Voltage Detectors! Voltage ranges from Proximity to 765kV





VIAV300™ Audible/Visual Detector 300kV

The **VIAV300** is a Combination Proximity/Direct Contact Voltage Detector with an Audible Visual Alarm to Indicate the Presence of Voltage, with an Operating Range from 240V to 300kV Line to Ground. Activation Threshold Meets ASTM Thresholds.

- Dual Application Design
- Audio/Visual Voltage Detector Detects 0 to 300kV Line to Ground (0 to 500kV Phase to Phase)
- An Easy-to-See 360 Degree Light Array with a 112 Decibel Alarm
- A Proximity or Direct Contact Meter on Overhead or Underground Systems
- Meter can Detect Voltage from the Ground on Bare Overhead Lines when Hand Held
- Test Capacitive Test Points and Secondary Voltage on Bare or Insulated Cables
- Detects Line to Ground Values for Nominal or Induced Voltages
- Water Resistant, and has a Strong Construction Designed to Withstand Wear
- Packaged in a Durable Bag
- One Year Warranty on Parts and Labor



RCDC1000™

Rail/Catenary Direct Current Meter 1000V

The **RCDC1000** Digital DC Resistive Voltmeter has a single range of 0 – 2kV. The unit consists of a meter probe, second probe and connector cable. This unit is designed to measure DC voltage between the negative return rail and overhead positive catenary conductor used on transit systems. The five position selector switch located on the face, controls OFF, ON, and Test. The OFF positions are for storage and transit. The ON position is for measurements from 0 to 1999 volts with one volt resolution. The T position tests basic meter functions and the digital display.

- A General Purpose 0 to 2kV DC Digital Voltmeter
- Designed to Confirm the Status of Electrical Systems
- Can be Used with Higher Currents than Hand-Held Models
- A Large Digital LCD Display has a Backlight for Easy Reading
- Both the Meter Probe and Secondary Probe have Threaded End Fittings
- The Unit Includes Three Adapters: a Hook Adapter, a Straight Adapter, and a Magnetic Track Adapter
- A 30-Foot Interconnecting Cable is also Included with other Cable Length Options Available
- Meter is Water Resistant and has a Strong Construction Designed to Withstand Wear
- Packaged in a Durable Bag
- One Year Warranty on Parts and Labor

A Range of Low Impedance and High Impedance DC Meters are Available!

ST500™ Service Tester 500 Amps

The **ST500** puts a high magnitude pulse between the neutral/hot leg or hot leg/hot leg for any secondary service (120V, 208, 277, 480V). It cannot be fooled by telephone and cable television bonding often missed by continuous loading devices.

- Identify Bad Conductor(s) From the Transformer to the Meter Base
- Indicate Integrity of Neutral Conductor to Prevent Excessive House Ground Currents
- Locate Both Hot Legs and Neutral at the Pedestal and/or Transformer Blocks.
- Locate Bad Connectors on Overhead Spans
- Identify De-energized URD Primary Cable in a Manhole or Ditch
- Feed IN/OUT on Primary URD Transformers, Switches, and Riser Poles
- One Year Warranty on Parts and Labor



Patented Technology



Patented Technology

ST800™ Service Tester 800 Amps

The **ST800** puts a high magnitude pulse between the neutral/hot leg or hot leg/hot leg for any secondary service (120V, 208, 277, 480V). It cannot be fooled by telephone and cable television bonding often missed by continuous loading devices.

- Identify Bad Conductor(s) From the Transformer to the Meter Base
- Indicate Integrity of Neutral Conductor to Prevent Excessive House Ground Currents
- Locate Both Hot Legs and Neutral at the Pedestal and/or Transformer Blocks.
- Locate Bad Connectors on Overhead Spans
- Identify De-energized URD Primary Cable in a Manhole or Ditch
- Feed IN/OUT on Primary URD Transformers, Switches, and Riser Poles
- One Year Warranty on Parts and Labor





DCI-50™ DC Pulser

The DCI-50 is a direct current pulsating service tester & phase identifier. Each tester has a single On/Off toggle switch and five LED indicator lights for ease of use. The pulsating tool injects a DC current of 50 Amps into the circuit being tested. The AVRCT, Audio Visual Receiver Current Transformer, picks up the signal from the DC Pulser and indicates signal strength and direction as well as positive cable identification. Patented methodology results in the most accurate and versatile de-energized primary cable tester and phase identifier available in the electric utility industry.

DCI-50



DCI-100



DCI-100™ DC Pulser

The DCI-100 is a direct current pulsating service tester & phase identifier. Each tester has a single On/Off toggle switch and five LED indicator lights for ease of use. The pulsating tool injects a DC current of 100 Amps into the circuit being tested. The AVRCT, Audio Visual Receiver Current Transformer, picks up the signal from the DC Pulser and indicates signal strength and direction as well as positive cable identification. Patented methodology results in the most accurate and versatile de-energized primary cable tester and phase identifier available in the electric utility industry.



GT400HDXL™ Grounds Tester Heavy Duty Extra Length 400Amps

The **GT400HDXL** provides quality testing for personal protective grounding assemblies. The GT Series Grounding Assembly Testers are designed to provide integrity testing of the electrical characteristics of portable protective grounding assemblies. The GT Series Testers provide a reliable test by administering Rated ASTM Current through the grounding assembly and measuring the voltage drop across the assembly. The voltage drop in conjunction with a thorough visual inspection determines if the grounding assembly meets ASTM electrical specifications.

- Powered by Conventional 115VAC Outlet Rated at 20 Amps or Higher
- Transformer Allows ASTM Continuous Current to be Applied to Cable
- Compact and Easy to Read Reference Chart
- Optional Voltmeter for Checking Clamp and Ferrule Connections
- Easily Converts for Testing Elbows, Bushings, Mechanical Jumpers, Substation Clamps, Truck Grounds and Cluster Grounds
- One Year Warranty on Parts and Labor



GT400HDXLVMA™ Grounds Tester Heavy Duty Extra Length 400Amps

The **GT400HDXLVMA** provides the same great features of the **GT400HDXL** but has the Voltmeter Addition (VMA), which allows for troubleshooting Clamp and Ferrule connections.

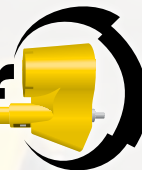
- Powered by Conventional 115VAC Outlet Rated at 20 Amps or Higher
- Transformer Allows ASTM Continuous Current to be Applied to Cable
- Compact and Easy to Read Reference Chart
- Easily Converts for Testing Elbows, Bushings, Mechanical Jumpers, Substation Clamps, Truck Grounds and Cluster Grounds
- One Year Warranty on Parts and Labor

GT600VMA™ Grounds Tester Volt Meter Addition 600Amps

The **GT600VMA** provide quality testing for personal protective grounding assemblies. The GT Series Grounding Assembly Testers are designed to provide integrity testing of the electrical characteristics of portable protective grounding assemblies. The GT Series Testers provide a reliable test by administering Rated ASTM Current through the grounding assembly and measuring the voltage drop across the assembly. The **GT600VMA** has the Voltmeter Addition (VMA), which allows for troubleshooting Clamp and Ferrule connections. The voltage drop in conjunction with a thorough visual inspection determines if the grounding assembly meets ASTM electrical specifications.

- Powered by Conventional 115VAC Outlet Rated at 20 Amps or Higher
- Transformer Allows ASTM Continuous Current to be Applied to Cable
- Compact and Easy to Read Reference Chart
- Optional Voltmeter for Checking Clamp and Ferrule Connections
- Easily Converts for Testing Elbows, Bushings, Mechanical Jumpers, Substation Clamps, Truck Grounds and Cluster Grounds
- One Year Warranty on Parts and Labor





GRT1000A **Ground Resistance Tester 1000 Ohms**

The **GRT1000A** is a major breakthrough for a traditional ground resistance tester. It is widely needed in the power, telecommunications, meteorology, oilfield, construction, industrial and electrical utility industry. For a loop grounding system, the operator can measure the ground resistance and test for continuity without having to break down the grounding wire, or use auxiliary electrodes (sometimes referred to as "stakes"). The clamp head is specially designed to reduce calibration errors by increasing the clamp pressure and the robust design of the transformers. The GRT1000A is able to read unwanted grounding currents up to 15 Amps! **It is safe, fast and simple to use!**



3 Phase ID Transmitter™

The 3 Phase ID Transmitter is designed to identify up to three shielded conductors before and after the center conductor is exposed while maintaining single or multiple ground connections. This unique tool features a transmitter module that produces three different signals, indicating each phase. The AVRCT, Audio Visual Receiver Current Transformer, a handheld passive receiver, indicates the correct phase conductors for positive phase identification, throughout the network. This device will significantly reduce previously needed coordination resulting in time savings and eliminates safety concerns by maintaining ground connections during the entire process. The transmitter module is powered by two Milwaukee lithium ion M18 batteries and incorporates cam lock connectors to quickly interface different attachments such as C style, ball socket, alligator and 15 KV elbows clamps.



Patented Pending



Separate case for cable option chosen

Choose one of the following cable options for your kit.



Alligator Clip Cable Option



"C" Clamp Cable Option



Ball Socket Cable Option



Elbow Cable Option



We Calibrate and Repair Our Meters.

Maximizing longevity and safety of your investment with the Bierer product line of high voltage test equipment, is of utmost importance to us. Strong commitment to our Customers and standing behind what we build is a standard. One year warranty on parts and labor with every meter and sustaining support thereafter.



Bierer and Associates further certifies the measurement standards and instruments used during the calibration of this product are traceable to the United States National Institute of Standard and Technology (NIST). At planned intervals, Bierer and Associates measurement standards are calibrated by comparison to or measured against the standards of NIST.

Bierer and Associates certifies that your product is calibrated and or repaired in accordance with applicable calibration procedures during the repair process. These processes are controlled and designed to assure that the instrument will meet its published specification.



Metering Accessories



8128TBALB75 35KV Bushing Adapter



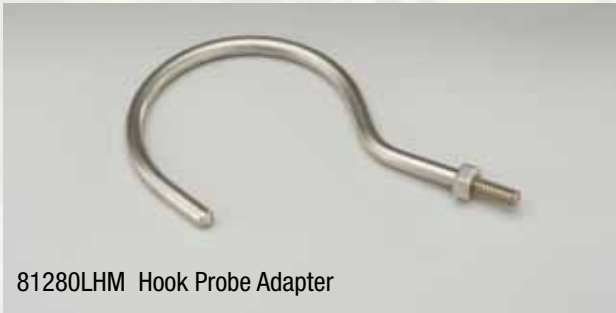
8128TBALB 15-25KV Bushing Adapter



8128TEALB Elbow Adapter



81280FG Ground Clamp Adapter



81280LHM Hook Probe Adapter



PA25PSA Phase Sequence Adapter



81280LPM Straight Probe Adapter



PA25LVA Low Voltage Probe Adapter



PA165UGA Plastic Universal Grip-All



3403 Universal Grip-All



Metering Accessories (Cont.)



10022CHL 22" Handle



10022HSL 24" Extension Handle

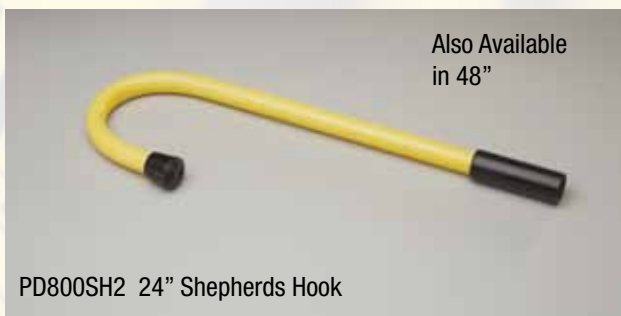


81280IE Zero Ohm Extension Adapter

0ohm Extension
also Available



PASODCHP



PD800SH2 24" Shepherds Hook

Also Available
in 48"



100009CHM 10" Handle



Medium Soft Bag



PA100P 100V DC Power Supply



Large Soft Bag



3402 Shotgun Stick Adapter

Pole Guards

Features:

Class 5 rating

- Rated max use voltage of 48.3kV guarded phase to guarded phase or 27kV phase to ground.
- Allows use for applications up to 46kV system voltage

High Density Polyethylene:

- Completely recyclable HDPE material
- Excellent chemical resistance properties
- Superior electrical insulation properties
- Excellent cold and hot weather properties

Application:

- Highly visible orange pole guard covers are used to protect workers from accidental contact with a bare conductor when setting or removing poles in an energized work area. They can also be used to cover poles when performing energized maintenance in an insulated bucket, pole platform or hot sticking.
- Available in 2ft, 4ft and 6ft lengths, with or without Velcro Binding Strap



6ft Pole Guard without Velcro Strap - BPG72



4ft Pole Guard with Velcro Strap - BPG48S

NEW PRODUCTS



Bushing Guard 12" - BBG12

Bushing Guards

Same Features as our Pole Guards

Application:

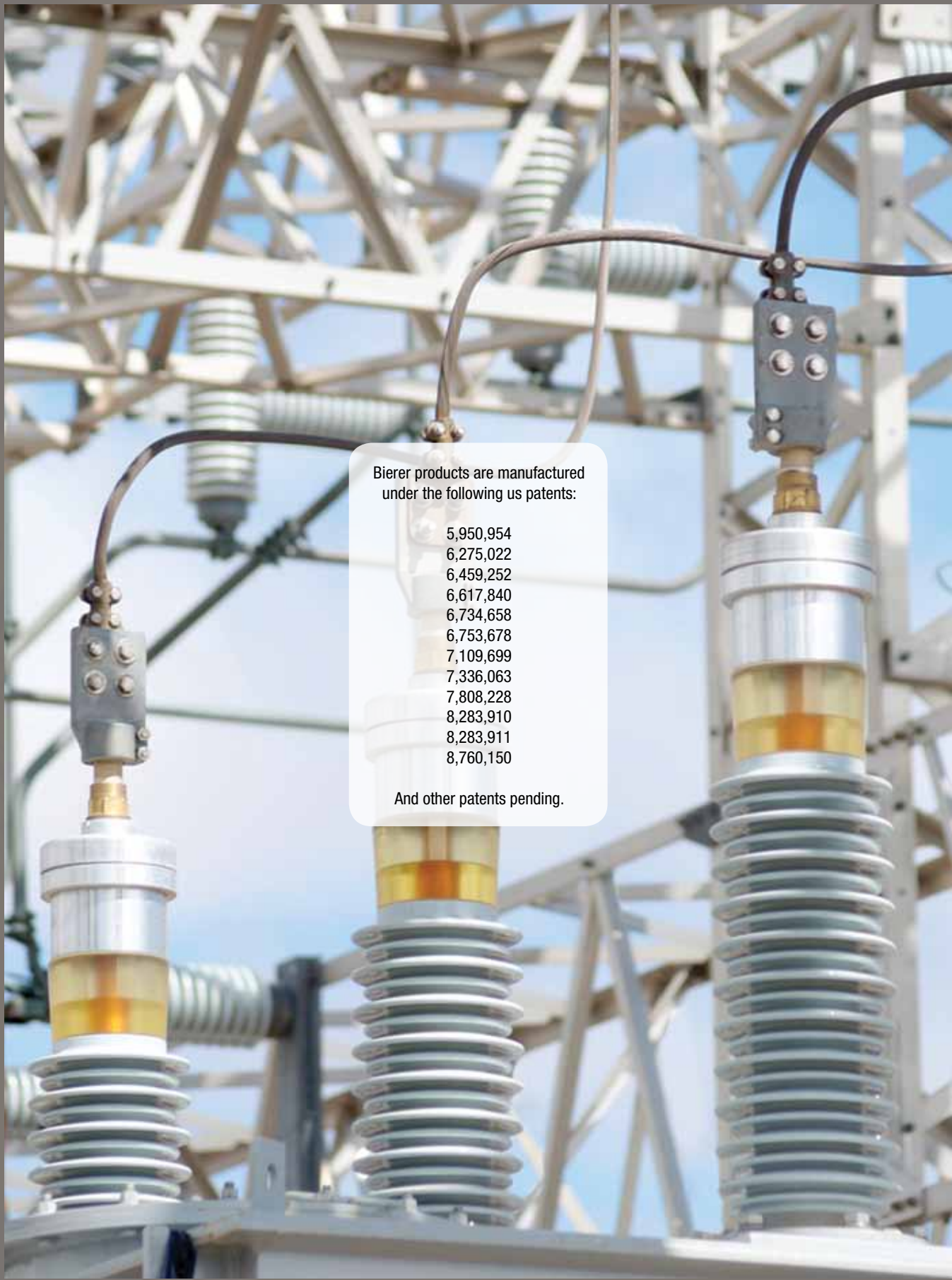
- Transformer Primary Bushing Guards magnetically attach to the outer edge of the top of Overhead Transformers to protect workers from accidental Primary Voltage contact while working on secondary conductors.
- Great addition to the Linemen's PPE program
- Available in 12", 18" and 24" radius widths, all at 24" height



Bushing Guard 18" - BBG18



Bushing Guard 24" - BBG24



Bierer products are manufactured under the following us patents:

- 5,950,954
- 6,275,022
- 6,459,252
- 6,617,840
- 6,734,658
- 6,753,678
- 7,109,699
- 7,336,063
- 7,808,228
- 8,283,910
- 8,283,911
- 8,760,150

And other patents pending.

Bierer METERS

Safety is number one.



August 2018

10730 Farrow Road
Blythewood, S.C. 29016
Phone: (803) 786-4839
Fax: (803) 786-5457
bierermeters.com

